

A photograph of a courtyard with a brick wall, two wooden lounge chairs, and a glass door leading into a house. The wall is made of reddish-brown bricks. The floor is paved with light-colored stones. There are some green plants hanging from the top of the frame. A black sign with white text is in the top left corner.

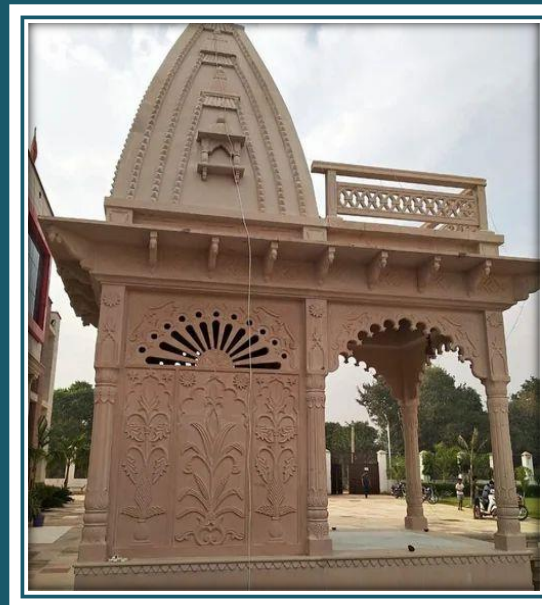
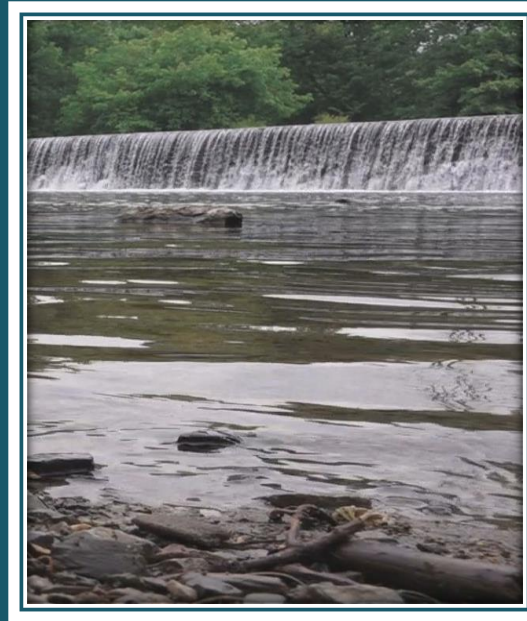
**Home for
Rejuvenation
Appreciation
Rental Income**

SATYADATTA GHARKUL Shahapur



"We introduced the offer to address the growing needs of a large segment of our population, who want to own a Second home, but are skeptical owing to the twin pressure of paying EMI's and maintenance simultaneously. This scheme will not only provide a solution to this dilemma, but will also ensure that prospective home buyers save on interest cost and earn capital appreciation."

Presenting **Satyadatta Gharkul** a beautiful project, a well-planned living space which is the hallmark of thoughtfully laid out Studios at reasonable prices. **Satyadatta Gharkul** brings a lifestyle that befits royalty with its beautiful apartments at fast growing Shahapur Murbad Highway. Your home will now serve as a perfect get-away after a tiring day at work. These residential studios offer luxurious homes that amazingly escape the noise and pollution of the city. The beautiful views and cross ventilation make your home a peaceful abode. In addition to that, there are a number of benefits of living in studio apartment with a good surrounding. **Satyadatta Gharkul** is conveniently located just near Samurddhi Highway Shahapur Exit to provide unmatched connectivity from all the important landmarks and places.

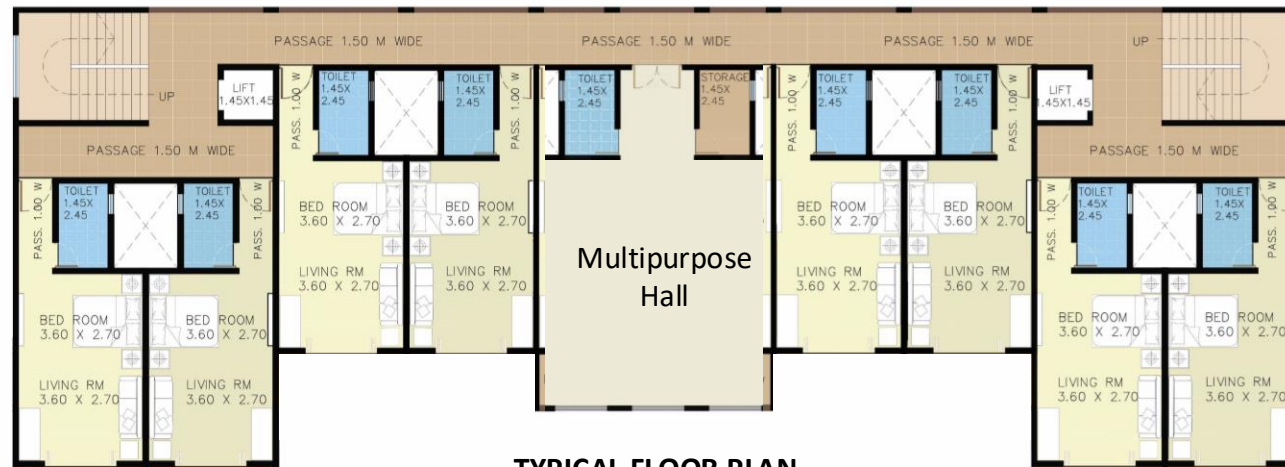


Homes fit for real weekend.

Large-scale housing is often void of character, detailing and customization. With a focus on craftsmanship and personalization, we flipped the mass model on its head and offered people the rare opportunity to create a home that would not only serve them but also inspire them. Everything from nature, farming, spiritual, and will always be the hallmarks of the Total Environment experience.

Internal Amenities for Building

- * 2 X 2 Vitrified Tiles for flooring
- * Designer Tiles in W.C, Bath room up to Door level
- * W.C , Bath Flooring with anti-skid tiles
- Green Marble / White Marble for windows sill for W.C Bath Door Frame
- * Conceal Plumbing work
- * Branded Plumbing and Sanitary Fittings
- * Powder Coated aluminum sliding windows
- * Electrical conceal wiring with ISI wire and modular switches
- * Main Door :- Molded flush door
- * Internal Door :- Laminated Flush door
- * Internal walls with POP finish and Acrylic Distemper
- * External walls, Apex Ultima or equivalent paint



TYPICAL FLOOR PLAN

LOCATION PLAN





Features

Fencing and Security gate
 Club House with Multi-purpose Hall,
 Landscaped garden with party lawn
 Street Light and lighting in common area
 Joggers Track
 Swimming Pool
 Badminton Court
 Table Tennis
 Carrom Room, Chess playing card

On Call Services

On call meals
 On call medicines
 On call housekeeping
 On call grocery
 On call laundry

Satyadatta Gharkul is nested in the project Virohavilla

VirohaVilla is a premium Bungalow Project spread over 11 acres which has ready to build plots with lifestyle amenities at Shahapur, Thane.

- Collector approved NA layout
- Separate 7x 12 Extract of each plot as per layout
- Maha RERA approved layout
- Loan available from all banks
- Free hold land
- Just 4 km from Samruddhi Highway's exit
- Located At National Highway No. 548 A
- Plenty of water
- Separate transformer for project

PROJECT HIGHLIGHTS FOR SATYADATTA GHARKUL

Strategically constructed

These residential apartments in **Satyadatta Gharkul** are beautifully planned to keep in mind the architecture which can soothe your senses whenever you step into your house after a tiring day from work.

It's time to leading a new life

Satyadatta Gharkul along with its pristine location earns supreme esteem to become one of the most prominent addresses you may want to live in. Not only just the atmosphere but the postcode leaves a lasting impression as well.

A vibrant neighborhood for people of all kinds

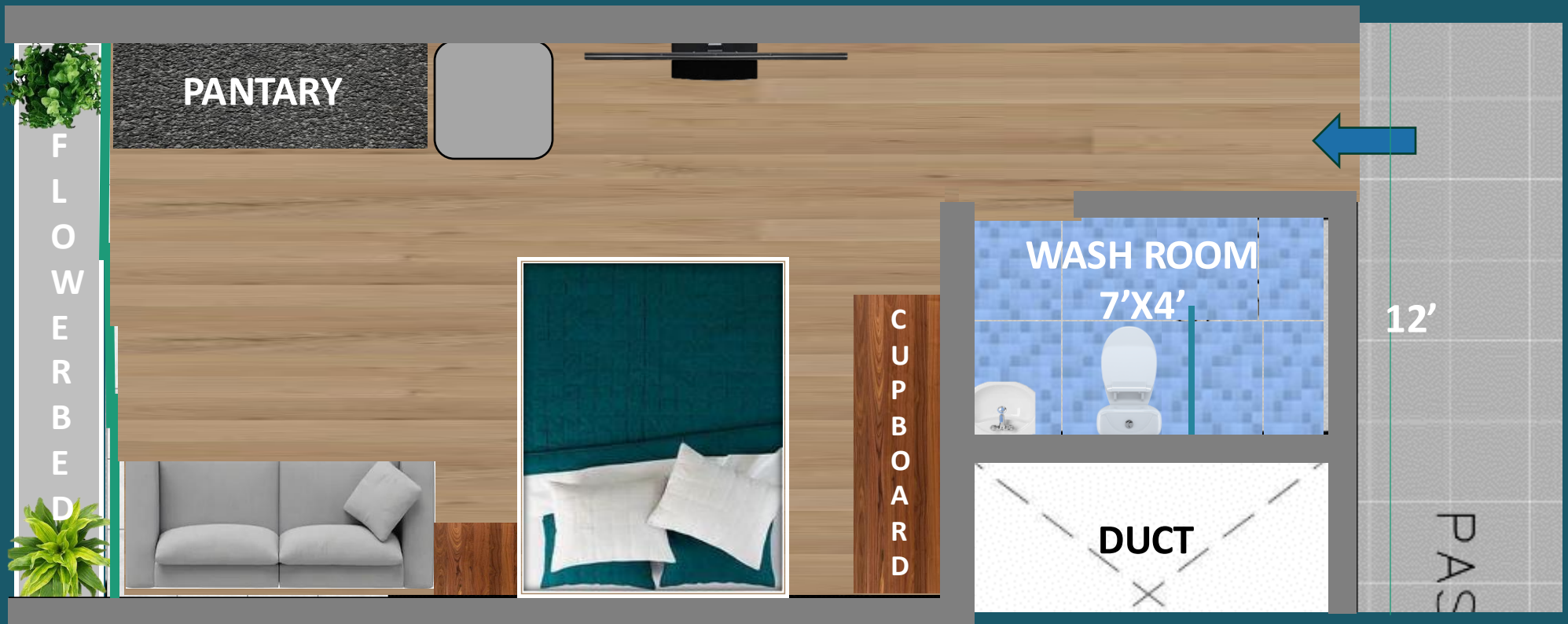
Satyadatta Gharkul presents the best aspects of modern life close to nature, and at a pace set by those notable residents living here. The development is a unique blend of nature and spirituality that ensures a vibrant community will thrive here.

Exceptional livability & easy connectivity

Commute easily by road or rail. Enjoy easy access and connectivity, via Samruddhi Express Highway, Mumbai Nasik Highway, Mumbai International Airport JUST 80 Km, Navi-Mumbai International Airport 80 Km, Asangao Railway Stations 10 Km.



24'



TYPICA LAYOUT OF INDIVIDUAL STUDIO

CARPET AREA 322 SQ.FT
USEABLE AREA 428.26 SQ.FT

SATYADATTA GHARKUL

AROUND SATYADATTA GHARKUL

Pure veg. Restaurant

We have exclusive veg. restaurant for the veg. lovers. You can come around in our farm and pick the vegetables you want, and get cooked as per your style.

Or we have our own menu to help you.

Typical Maharashtrian

Thali is our main attraction



Viroha Farms

AROUND SATYADATTA GHARKUL

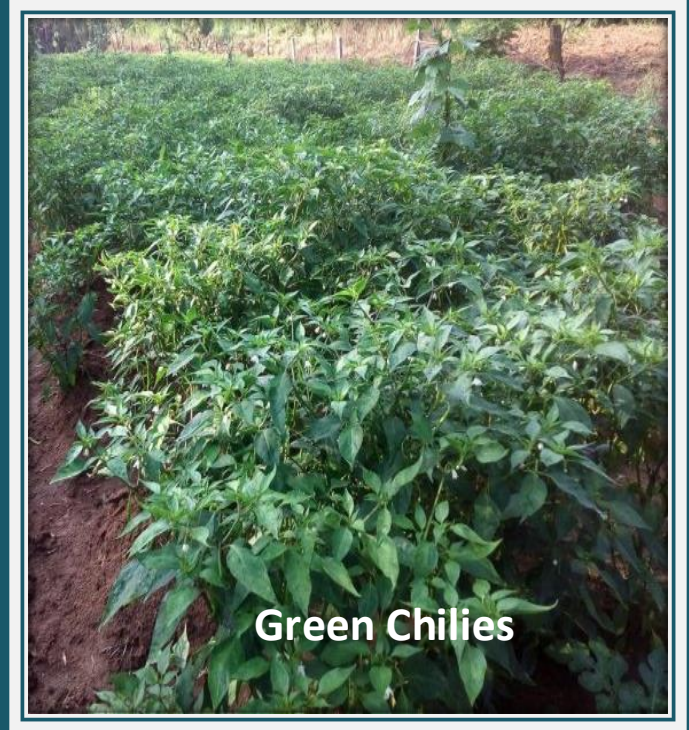


When some one is looking for Farm Life, adventure comes automatically. Zip Line and other adventure games are waiting for you.



AROUND SATYADATTA GHARKUL

Spice Garden



We use spices in our daily life, but walking through Spice garden and making our children familiar to Spice trees is a unique experience.

AROUND SATYADATTA GHARKUL



Organic Farming



Vegetable Farming



Dogs Cannel



Gir Cows

AROUND SATYADATTA GHARKUL

- **Yoga Center**

Apart from the spiritual goals, the physical postures of yoga are used to alleviate health problems, reduce stress and make the spine supple in contemporary times. Yoga is also used as a complete exercise program and physical therapy routine.



AROUND SATYADATTA GHARKUL

- Meditation Center

Find out the purpose of your life

Discover the mystical secrets of life and creation

Experience freedom and explore the innermost depth of your being

Take gentle guided steps on the path to enlightenment

Experience the absolute truth, highest knowledge and unparalleled bliss in the presence of the Master.

The experiences on the spiritual path are definite yet inexpressible.



AROUND SATYADATTA GHARKUL

- **Panchkarma Center**

Eliminate toxins and toxic conditions from your body and mind, Restore your constitutional balance improving health and wellness

Strengthen your immune system and become more resistant to illness. Reverse the negative effects of stress on your body and mind thereby slowing the aging process. Enhance your self-reliance, strength, energy, vitality and mental clarity
Bring about deep relaxation and sense of well-being



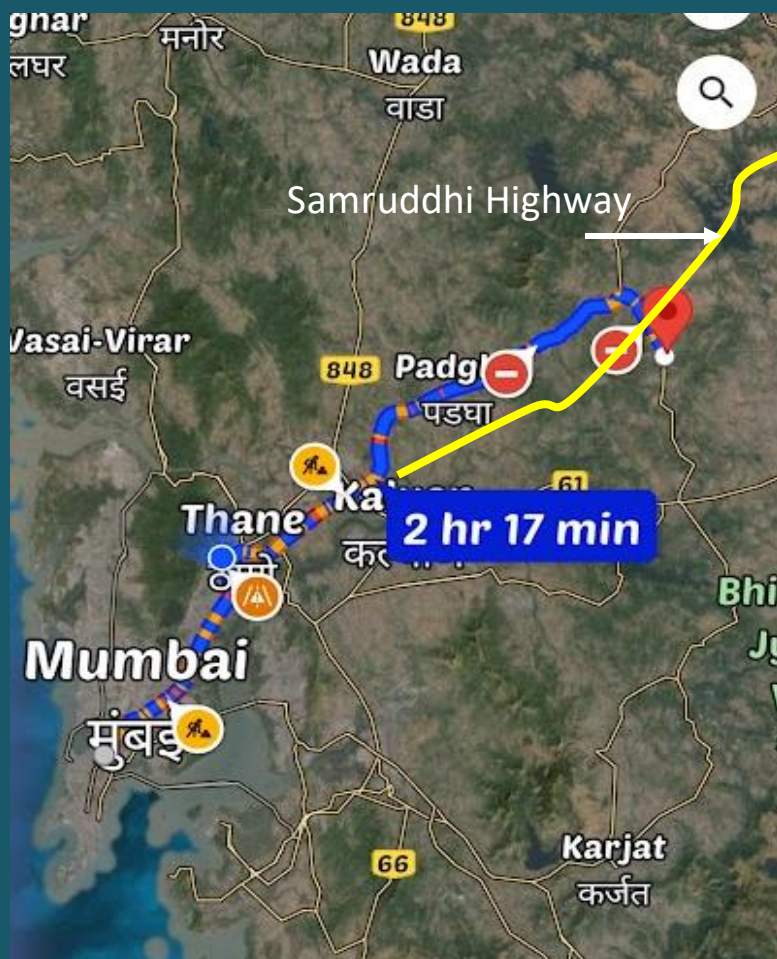
LOCATION AND ACESSE

ADDRESS

LOCATED AT VILLAGE LENAD,
SHAHAPUR MURBAD
HIGHWAY,
TALUKA SHAHAPUR, DIST
THANE
MAHARASHTRA INDIA

DISTANCESS

DADAR : 85 KM
THANE: 60 KM
IGATPUR: 52 KM
NASIK: 100 KM
PUNE: 165 KM



SAMRUDDHI EXPRESS WAY
SHAHAPUR EXIT 3KM



SCAN FOR LOCATION

For more details
Satyadatta Gurukul Trust
Mrs. Sandhya Bhohe 9967447570